

# PILLOW BALL SUSPENSION ARMS

## ADJUSTABLE PILLOW BALL TENSION RODS

### FEATURES

Keeps the front wheels stable in quick turns. Handling, corner speed and steering response are dramatically increased. The high rigidity pillow ball rods also increase stability under heavy braking and straight line acceleration by reducing toe out and friction.

### FITTING

The pillow ball suspension arms are simple bolt on performance modification.

### ADJUSTMENTS

The turn buckle allows for simple adjustments in wheel alignment settings / changes.

### DURABILITY

Covered with the rubber boots, durability of the pillow balls are increased rejecting the water, mud, and dust.

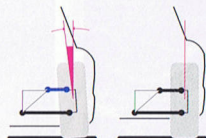


## NEGATIVE CAMBER UPPER "A" ARMS

### FEATURES

Increased cornering performance.

By fitting these negative upper "A" arms, the surface of contact increases under cornering for greater performance.



## REAR TRAILING ROD ASSEMBLY

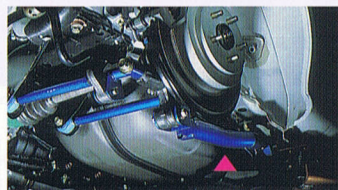
### FEATURES

Controls unwanted forces under acceleration and braking.

CUSCO's pillow ball joint trailing rods prevent unwanted wheel hop and vibration under acceleration and provide smooth braking. Tire grip is therefore increased thus making your driving experience exhilarating! You will notice a day and night difference in improve traction, braking and cornering characteristics of your pride and joy.

### MAINTENANCE

The turn buckle type enables delicate caster angle adjustments.



## REAR LATERAL LINKS

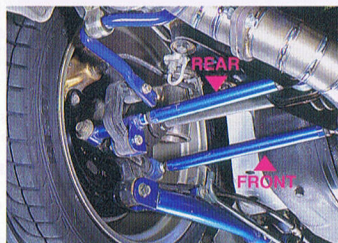
### FEATURES

Controls unwanted forces under acceleration and braking

CUSCO's pillow ball joint lateral links are designed to secure traction in drifting and stability during acceleration under high speed cornering. Most effective when fitted with racing tires or bigger than production size tires.

### MAINTENANCE

Toe-in and toe-out settings are easy to adjust.



## PILLOW BALL UPPER MOUNT

### FEATURES

Controls unwanted forces under acceleration and braking

Both center lock and camber adjustable upper pillow ball mounts Improve steering response and performance overwhelmingly. A dramatic increase in stability over bumps and high-speed corners keeps you on your intended line, w/stability and safety under corner braking being also dramatically increased.

### SPECIFICATION

Both center lock and camber adjustable type use

6mm thick plate uses 2017S duralumin.

A choice of pillow collars for your individual needs.

### CAMBER ADJUSTMENT

Camber adjustments can be made using the adjustable type upper pillow ball mounts



# PILLOW BALL SUSPENSION ARMS

## ADJUSTABLE REAR UPPER ARMS

### FEATURES

Provides proper camber angle and improves car movement

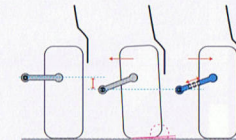
Prevents irregular tire wear and keeps the tire planted to the road surface.

### MORE FEATURES

More precise wheel alignment is possible with the additional of the CUSCO adjustable rear toe control rods.

### MAINTENANCE

The turn buckle will correct the improper camber that is caused by the change of vehicle height.



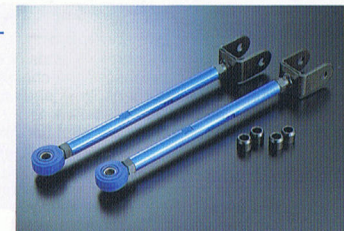
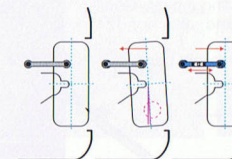
## ADJUSTABLE TOE CONTROL ROD

### FEATURES

Understeer or oversteer as you wish.

### MAINTENANCE

With the turn buckle, the rear toe-in can be adjusted easily.



## DRAG ROD \* for competition use only

### FEATURES

Provides precise handling for Nissan's equipped with HICAS

The drag rod replaced HICAS systems, eliminating the softness feel at high speed by providing a direct feel in car control and traction.



## GT LINK KIT

### FEATURES

Newly developed Metal/Plastic "Hybrid pillow" is adopted.

Solid and stable performance like metal pillow-ball joints, but still with the silence like rubber bushings.

GT link will provide you the stable alignment, that gives you more traction and cornering performance.

